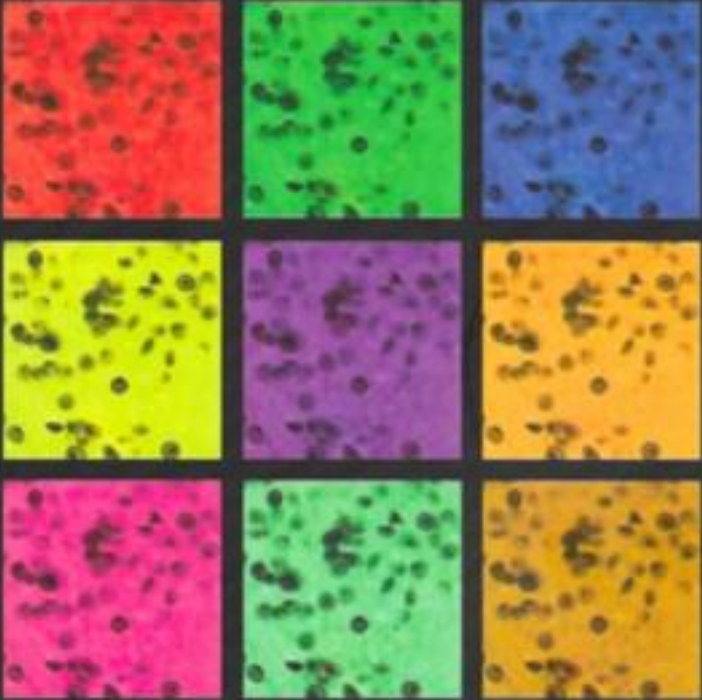


Diagnostic value of bronchoalveolar lavage
in infectious disorders



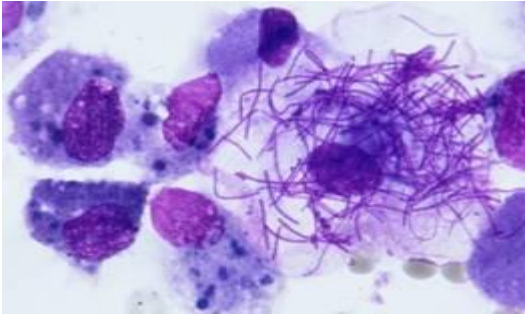
C.F.M. Linssen

BALF cytology in infectious disorders

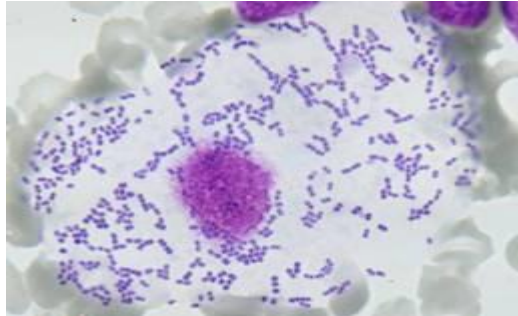


Dr. Kitty Linssen
Medical Microbiologist, MD, PhD

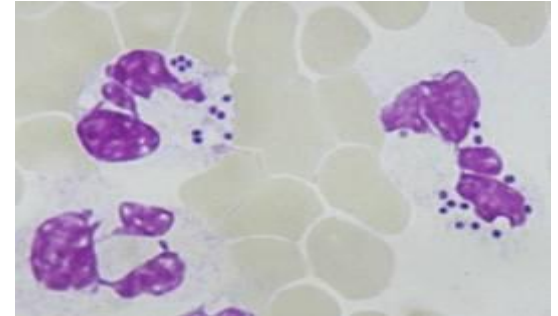
BALF cytology in infectious disorders: micro-organism



Squamous epithelial cell
with oral bacteria

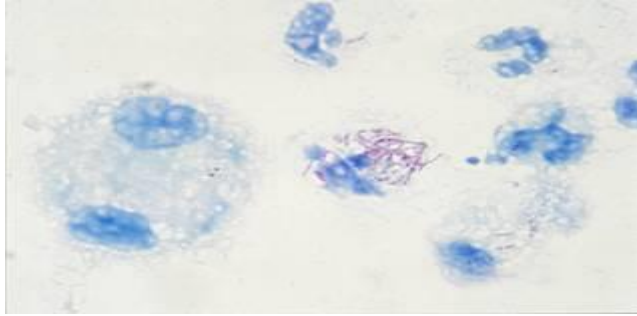


Squamous epithelial cell
with oral bacteria

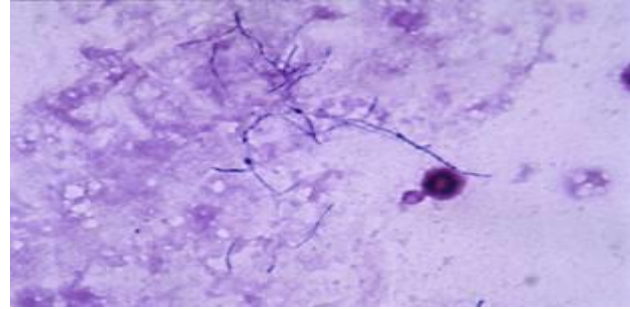


Infected polymorpho-
nuclear neutrophils

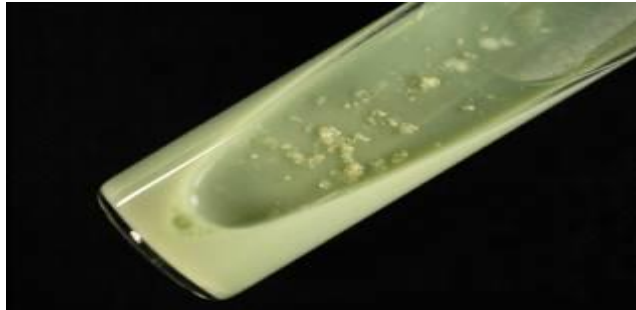
Granulomatous infections in BALF



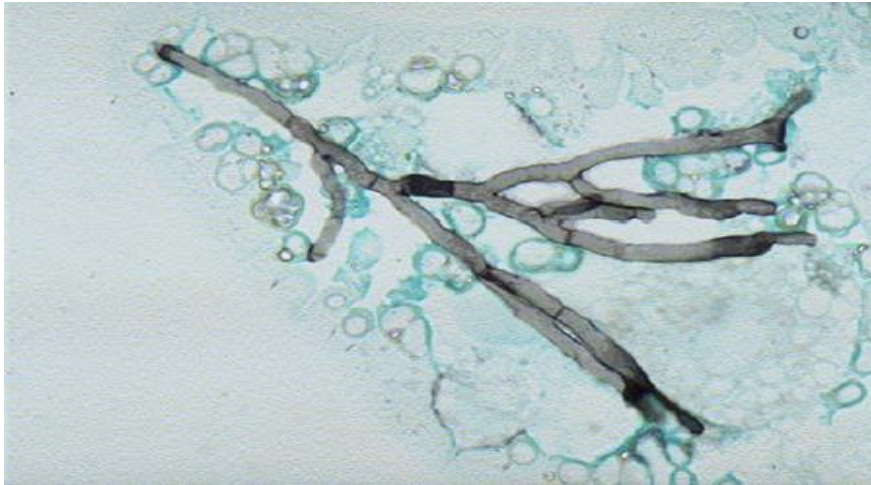
M. tuberculosis



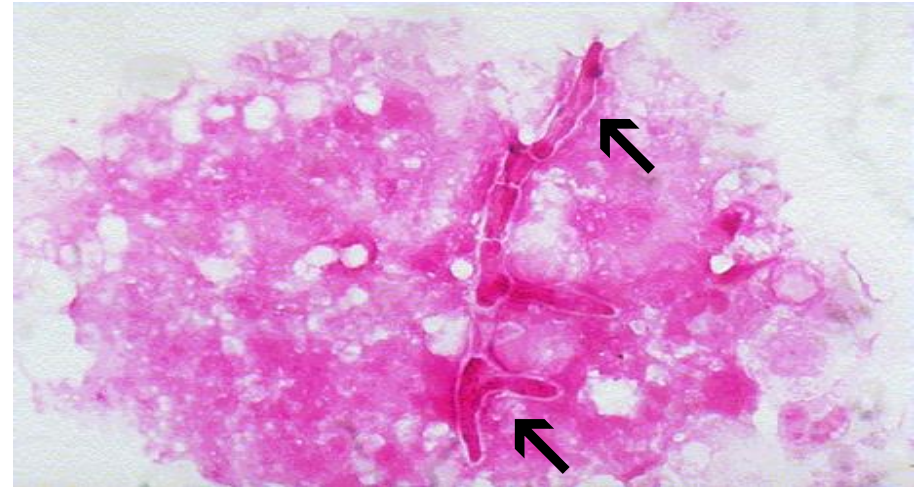
Nocardia



Aspergillus fumigatus present in BALF

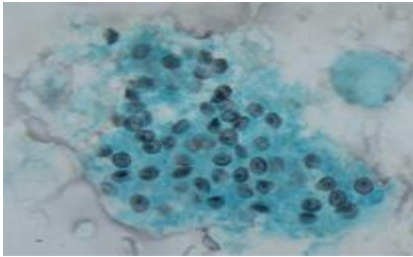


Grocott stain

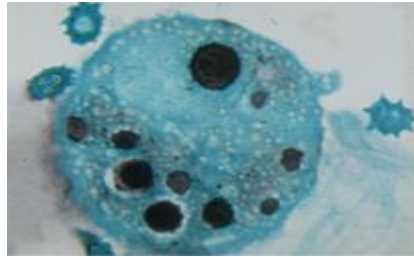


Gram stain

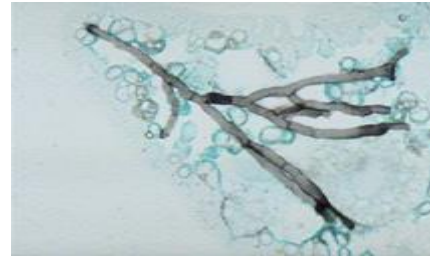
Results Grocott stain BALF



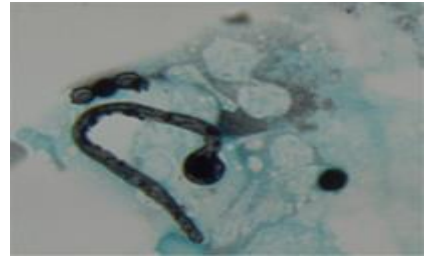
*Pneumocystis
jiroveci*



*Cryptococcus
neoformans*

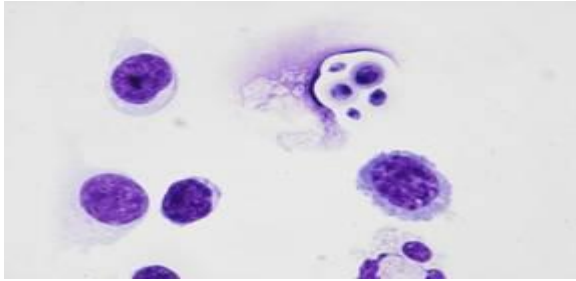


*Aspergillus
fumigatus*

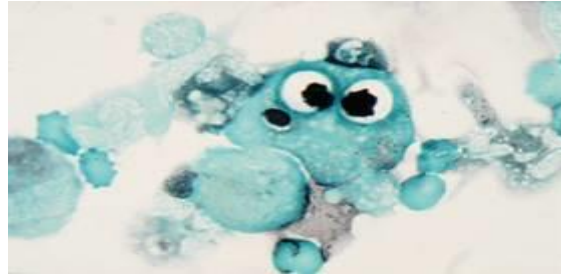


*Candida
albicans*

Cryptococcus neoformans in BALF



MGG stain

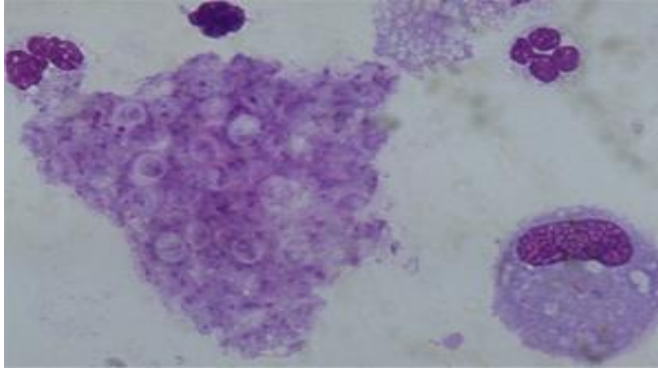


Grocott stain

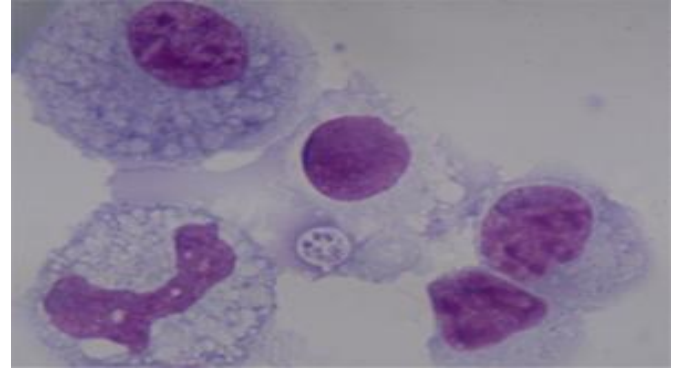


Leukophor

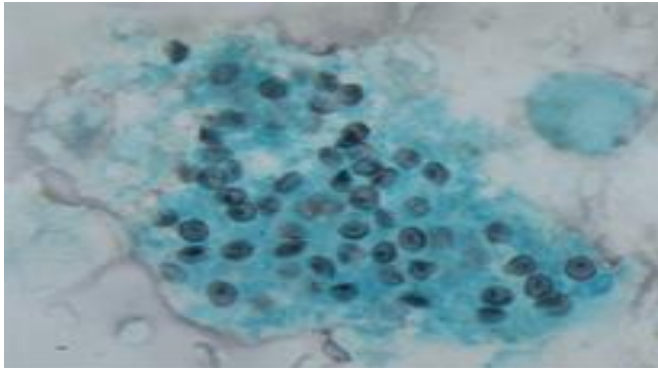
Pneumocystis jiroveci present in BALF



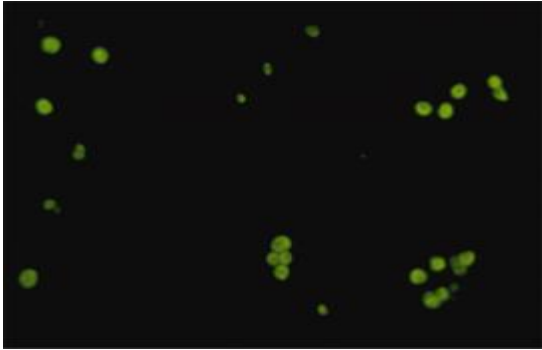
Foamy alveolar cast



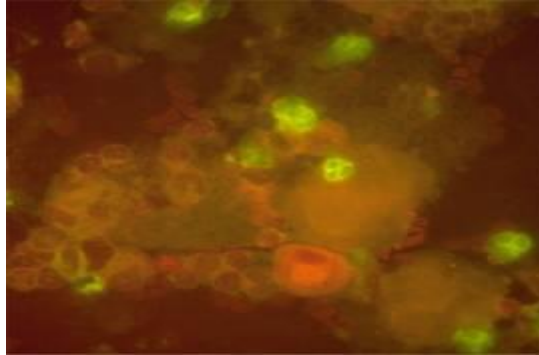
P. jiroveci single trophozoite



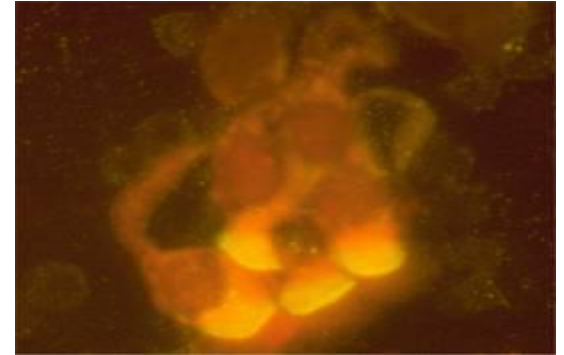
Direct immunofluorescence stain BALF



*Pneumocystis
jiroveci*



Cytomegalovirus



Herpes simplex

PhD theses dealing with BAL

