

Case report



Patient, male 38 years old



painter (Graffiti, chemicals)

- non-smoker
- no immunosuppression
- interstitial pneumonia

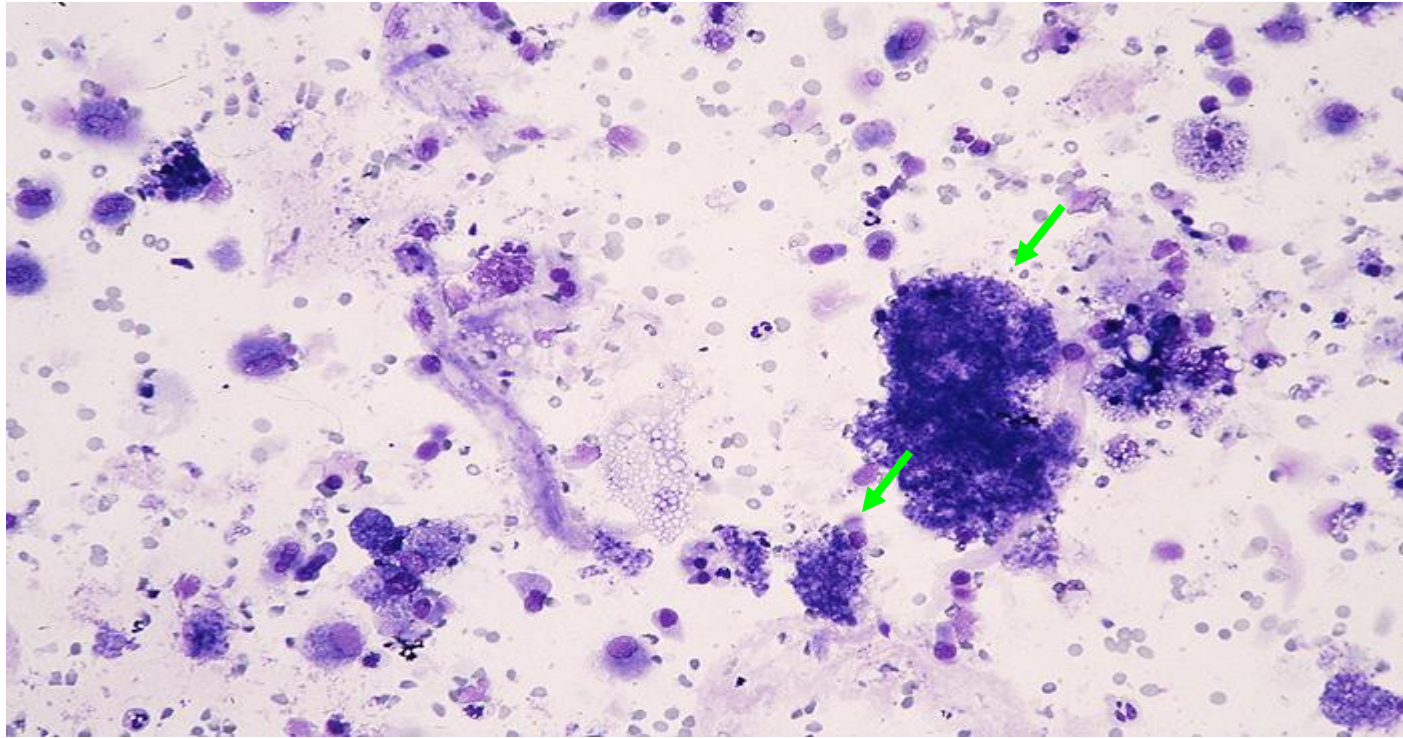
Patient, male 38 years old

Recovered volume: 120 ml

Total cell count: 300,000 /ml

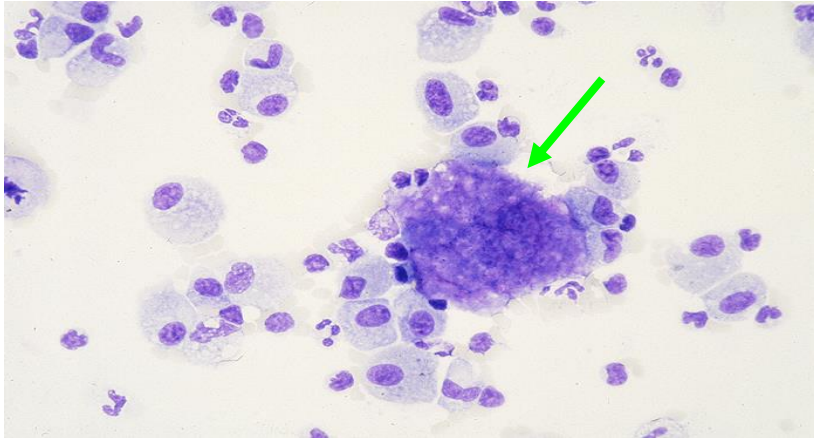
Am	9.0%	SEC	1/500
Lym	78.0%	BEC	2/500
PMN	7.8%	ICO	0.0%
EOS	4.6%		
Mc	0.6%		

May-Grünwald Giemsa stain



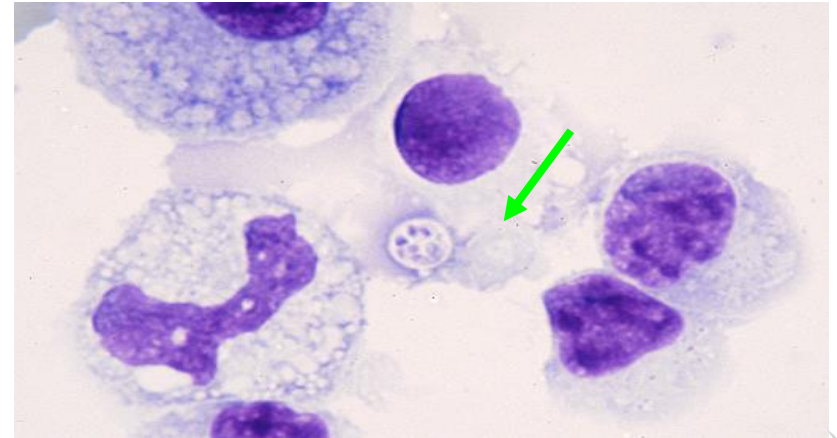
Magnification 100x

May-Grünwald Giemsa stain

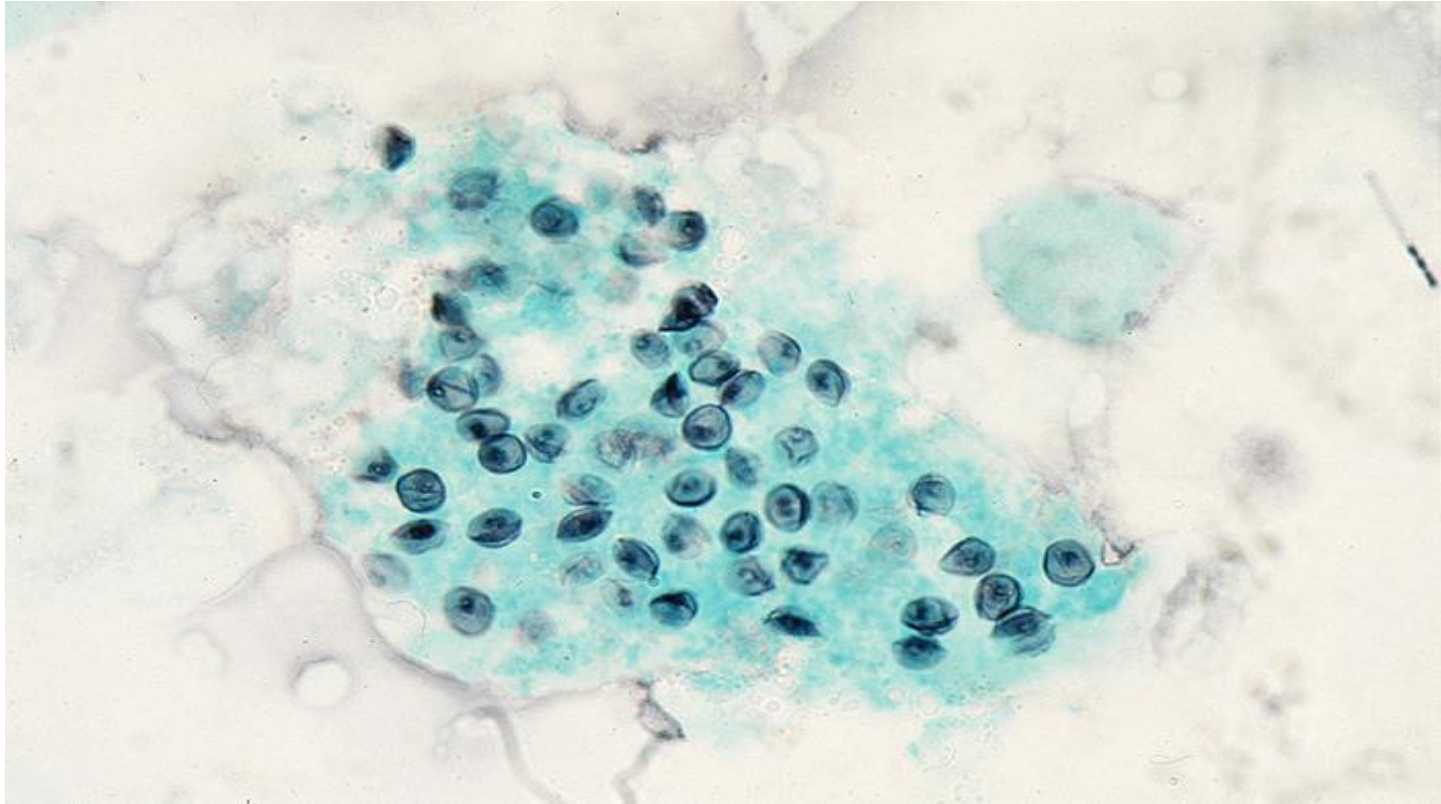


Magnification 400x

Magnification 1000x



Grocott stain



Patient, male 38 years old

Recovered volume: 120 ml

Total cell count: 300,000 /ml

Am	9.0%	SEC 1/500
Lym	78.0%	BEC 2/500
PMN	7.8%	ICO 0.0%
EOS	4.6%	
Mc	0.6%	

Activated lymphocytes

Reactive type II pneumocytes

Foamy alveolar casts of *Pneumocystis jiroveci*

Cysts of *Pneumocystis jiroveci*

Pneumocystis jiroveci can be seen in BAL fluid of patients with Pneumocystis pneumonia. One of the stains that can be used to identify this fungus is a Grocott stain, in which the fungus appears a certain colour.

This colour is:

- a. purple
- b. pink
- c. blue
- d. black



Patient, male 38 years old

Recovered volume: 120 ml

Total cell count: 300,000 /ml

Pneumocystis pneumonia

Am	9.0%	SEC	1/500
Lym	78.0%	BEC	2/500
PMN	7.8%	ICO	0.0%
EOS	4.6%		
Mc	0.6%		

Activated lymphocytes

Reactive type II pneumocytes

Foamy alveolar casts of *Pneumocystis jiroveci*

Cysts of *Pneumocystis jiroveci*

Pneumocystis jiroveci can be seen in BAL fluid of patients with Pneumocystis pneumonia. One of the stains that can be used to identify this fungus is a Grocott stain, in which the fungus appears a certain colour.

This colour is:

- a. purple
- b. pink
- c. blue
- d. black**

PhD theses dealing with BAL

